

PLAT Examples

Residential Subdivision Plat - Example 1

Orig: 902 / BndI: 12390

Page 1 of 1

UTILITY SERVICE SURVEILLANCE

WHEREAS THE UTILITY SERVICE SURVEILLANCE PLAN IS PART OF THE SUBDIVISION SURVEILLANCE PLAN AND THE UTILITY SERVICE SURVEILLANCE PLAN IS PART OF THE SUBDIVISION SURVEILLANCE PLAN AND THE UTILITY SERVICE SURVEILLANCE PLAN IS PART OF THE SUBDIVISION SURVEILLANCE PLAN...

NOTE:

THE UTILITY SERVICE SURVEILLANCE PLAN IS PART OF THE SUBDIVISION SURVEILLANCE PLAN AND THE UTILITY SERVICE SURVEILLANCE PLAN IS PART OF THE SUBDIVISION SURVEILLANCE PLAN AND THE UTILITY SERVICE SURVEILLANCE PLAN IS PART OF THE SUBDIVISION SURVEILLANCE PLAN...

WASTEWATER IMPACT FEE CERTIFICATION

WHEREAS THE WASTEWATER IMPACT FEE CERTIFICATION IS PART OF THE SUBDIVISION SURVEILLANCE PLAN AND THE WASTEWATER IMPACT FEE CERTIFICATION IS PART OF THE SUBDIVISION SURVEILLANCE PLAN AND THE WASTEWATER IMPACT FEE CERTIFICATION IS PART OF THE SUBDIVISION SURVEILLANCE PLAN...

NOTE:

THE WASTEWATER IMPACT FEE CERTIFICATION IS PART OF THE SUBDIVISION SURVEILLANCE PLAN AND THE WASTEWATER IMPACT FEE CERTIFICATION IS PART OF THE SUBDIVISION SURVEILLANCE PLAN AND THE WASTEWATER IMPACT FEE CERTIFICATION IS PART OF THE SUBDIVISION SURVEILLANCE PLAN...

GRADING INSTRUCTIONS

THE GRADING INSTRUCTIONS ARE PART OF THE SUBDIVISION SURVEILLANCE PLAN AND THE GRADING INSTRUCTIONS ARE PART OF THE SUBDIVISION SURVEILLANCE PLAN AND THE GRADING INSTRUCTIONS ARE PART OF THE SUBDIVISION SURVEILLANCE PLAN...

NOTE:

THE GRADING INSTRUCTIONS ARE PART OF THE SUBDIVISION SURVEILLANCE PLAN AND THE GRADING INSTRUCTIONS ARE PART OF THE SUBDIVISION SURVEILLANCE PLAN AND THE GRADING INSTRUCTIONS ARE PART OF THE SUBDIVISION SURVEILLANCE PLAN...

SEWERAGE

THE SEWERAGE IS PART OF THE SUBDIVISION SURVEILLANCE PLAN AND THE SEWERAGE IS PART OF THE SUBDIVISION SURVEILLANCE PLAN AND THE SEWERAGE IS PART OF THE SUBDIVISION SURVEILLANCE PLAN...

RESTRICTIONS

THE RESTRICTIONS ARE PART OF THE SUBDIVISION SURVEILLANCE PLAN AND THE RESTRICTIONS ARE PART OF THE SUBDIVISION SURVEILLANCE PLAN AND THE RESTRICTIONS ARE PART OF THE SUBDIVISION SURVEILLANCE PLAN...

PRIVATE DEDICATION

THE PRIVATE DEDICATION IS PART OF THE SUBDIVISION SURVEILLANCE PLAN AND THE PRIVATE DEDICATION IS PART OF THE SUBDIVISION SURVEILLANCE PLAN AND THE PRIVATE DEDICATION IS PART OF THE SUBDIVISION SURVEILLANCE PLAN...

PRIVATE SANITARY SEWER SYSTEM DEDICATION

THE PRIVATE SANITARY SEWER SYSTEM DEDICATION IS PART OF THE SUBDIVISION SURVEILLANCE PLAN AND THE PRIVATE SANITARY SEWER SYSTEM DEDICATION IS PART OF THE SUBDIVISION SURVEILLANCE PLAN AND THE PRIVATE SANITARY SEWER SYSTEM DEDICATION IS PART OF THE SUBDIVISION SURVEILLANCE PLAN...

PRIVATE DRAINAGE

THE PRIVATE DRAINAGE IS PART OF THE SUBDIVISION SURVEILLANCE PLAN AND THE PRIVATE DRAINAGE IS PART OF THE SUBDIVISION SURVEILLANCE PLAN AND THE PRIVATE DRAINAGE IS PART OF THE SUBDIVISION SURVEILLANCE PLAN...

LEGEND

THE LEGEND IS PART OF THE SUBDIVISION SURVEILLANCE PLAN AND THE LEGEND IS PART OF THE SUBDIVISION SURVEILLANCE PLAN AND THE LEGEND IS PART OF THE SUBDIVISION SURVEILLANCE PLAN...

APPROVED

THE APPROVED IS PART OF THE SUBDIVISION SURVEILLANCE PLAN AND THE APPROVED IS PART OF THE SUBDIVISION SURVEILLANCE PLAN AND THE APPROVED IS PART OF THE SUBDIVISION SURVEILLANCE PLAN...

FINAL PLAT

FOR HOO SHOO TOO LAKES

BEING TRACT X OF THE JOHN C. CREAGHAN PROPERTY AND TRACT Y

LOCATED IN SECTION 42, T-8-S, R-2-E GREENSBURG LAND DISTRICT, EAST BATON ROUGE PARISH, LOUISIANA

FOR SUNDANCE DEVELOPMENT, L.L.C. 410 HIGHLAND ROAD CROSSING BATON ROUGE, LOUISIANA 70810

GWS Engineering, Inc.

Engineering Consultants - Land Development

7030 Parkview Rd. • Suite 500 • Baton Rouge, LA 70806

GENERAL NOTES:

1. SHOWS:
 - a. FLOOD ZONE
 - b. HOUSING UNIT AS A 1.5 U
 - c. 10' PUBLIC DRIVE AS A 10' P
 - d. 10' SIDEWALK AS A 10' S
 - e. 10' SIDEWALK AS A 10' S
2. FLOOD ZONE
3. HOUSING UNIT AS A 1.5 U
4. 10' PUBLIC DRIVE AS A 10' P
5. 10' SIDEWALK AS A 10' S
6. 10' SIDEWALK AS A 10' S

APPROVED:

PLANNING COMMISSION CITY OF BATON ROUGE AND PART OF EAST BEAUFORT

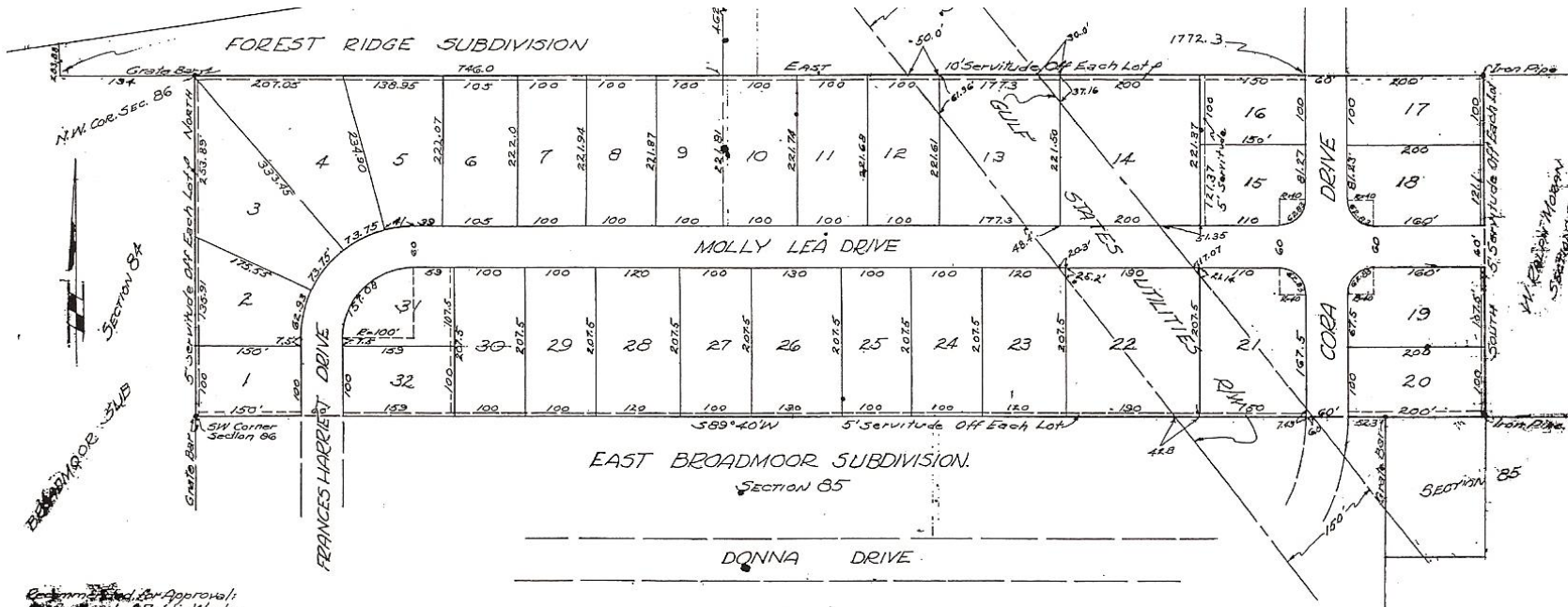
DATE: 11-22-11

APPROVED:

PLANNING COMMISSION CITY OF BATON ROUGE AND PART OF EAST BEAUFORT

DATE: 11-22-11

Residential Subdivision Plat - Example 3



Recommended for Approval:
Department of Public Works
East Baton Rouge Parish

By: *[Signature]*
C. L. LESTER, Whrns
Date: 2-2-53, Director

Recommended for Approval:
Planning Commission
East Baton Rouge Parish

By: *[Signature]*
W. EVANS,
Date: 2-2-53, Planning Engineer

Approved:
Parish Council
East Baton Rouge Parish

By: *[Signature]*
CLYDE R. DICHA,
Date: 2-2-53, Clerk

Revised Jan 8, 1954
To show corrected dimensions
where Gulf States Utilities R/W
crosses Lots 12, 13, 14, 21, 22 & 23

RECORDED
ORIGINAL 56
BUNDLE 3093

By: *[Signature]*
G.E. & Surveyor

FINAL PLAT OF NORTH BROADMOOR

Located in Section 86, T-7-S R-1-E of the Greensburg District
of Louisiana, East of the Mississippi River.

FOR
NORTH BROADMOOR, INC.

This is to certify that this Plat is made in accordance with Act 51
of 1930 and conforms to all Parish Ordinances governing
subdivision of land.
Corners are marked with iron pipes, and where corners fall
within servitudes, pipes are set on servitude line.

Baton Rouge, La.
Jan. 23, 1953

MUNDINGER, DUPRE & COOPER
CIVIL ENGINEERS & SURVEYORS
By: *[Signature]*

Not to Scale



KNOW ALL MEN BY THESE PRESENTS:

That North Broadmoor, Inc. has caused to be made this Plat of
NORTH BROADMOOR, located in the Parish of East Baton
Rouge, Louisiana.

The streets and rights-of-way shown on this Plat are here by
dedicated to the perpetual use of the public for proper
purposes and further all areas shown as servitudes are
hereby granted to the public for use of utilities, drainage,
removal of septic tank effluent or sewage or any other
proper purpose for the general interest of the public.

No person shall provide or install a method of
sewage treatment other than connection to a sanitary
to a sanitary sewer system, until the design for that method
of treatment and disposal has been approved by the East
Baton Rouge Parish Health Unit.

Property shown is subject to restrictions as filed
in Original Bundle.

JULES B. LANDRY
North Broadmoor, Inc.
By: *[Signature]*
President

Residential Subdivision Plat - Example 4

